

Diagram 1) Linear Comparison between the Hole Surfaces (mm²) in 15-day Interval in the Groups

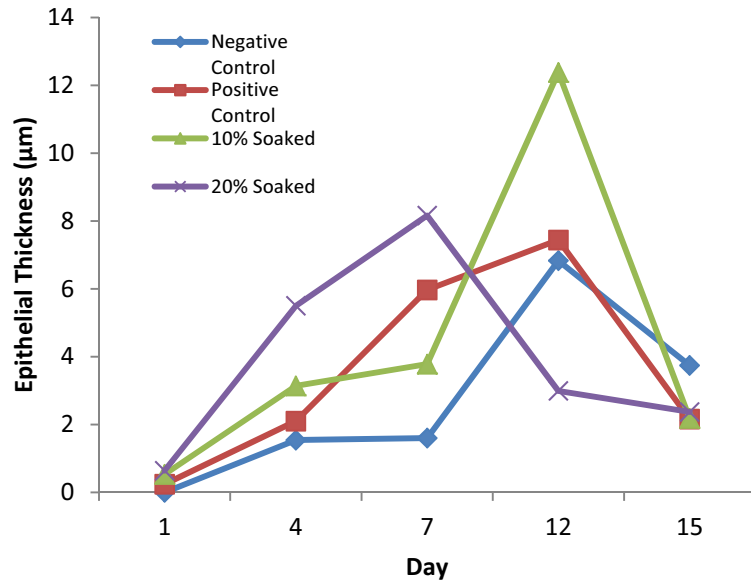


Diagram 2) Comparison between Epithelial Thicknesses (µm) in 15-day Interval in the Groups

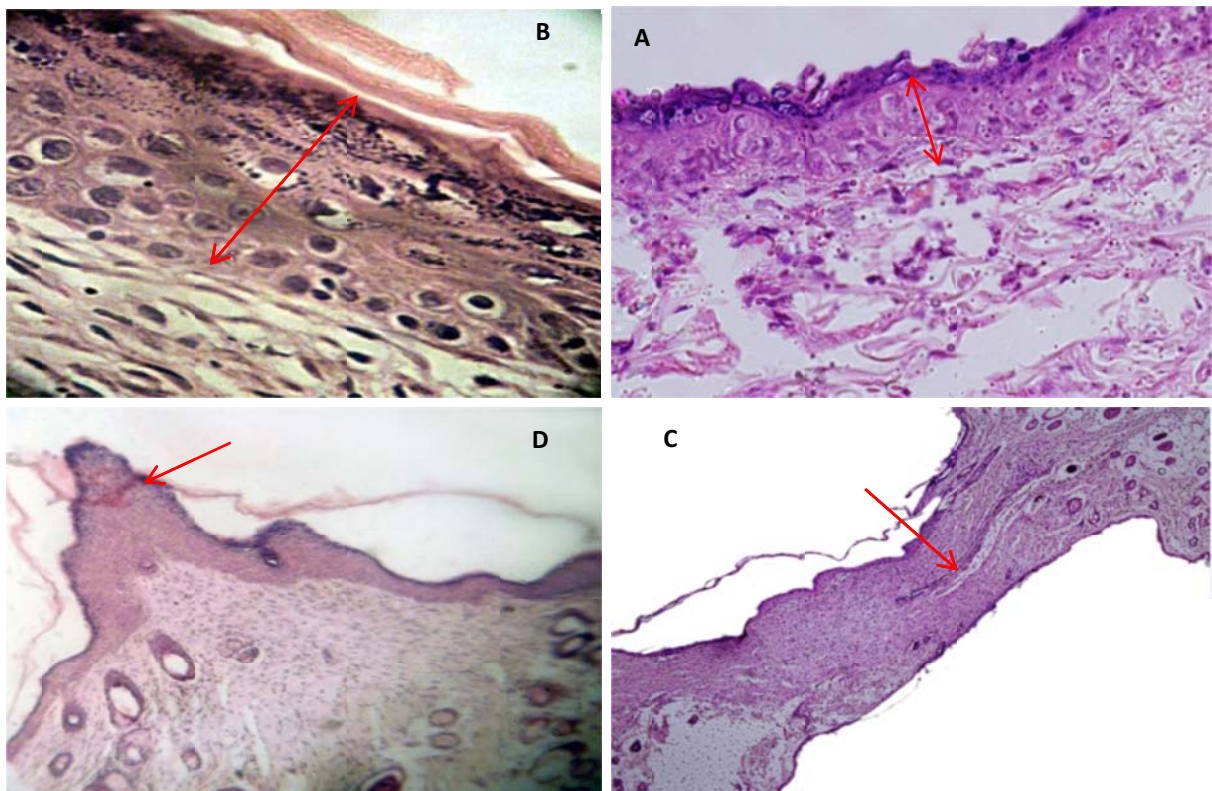


Fig. 1) Epithelium Cross-section with Hematoxylin-Eosin Staining (the arrows indicating the epithelium thicknesses): (A) The Healing Area of the Skin of the Rat in Negative Control Group at Day 7 ($\times 400$); (B) The Healing Area of the Skin of the Rat in Treatment Group with Soaked 20% Hydro-alcoholic Extract at Day 7 ($\times 800$); (C) The Healing Area of the Skin of the Rat in the Treatment Group with 20% Hydro-alcoholic Soaked Extract at Day 12 with Perished Epithelial Column ($\times 200$); (D) The Healing Areas of the Skin of the Rat in Treatment Group with 10% Hydro-

alcoholic Soaked Extract at Day 12 with Visible Wound-edge Leading towards Its opposite Side
(×100)