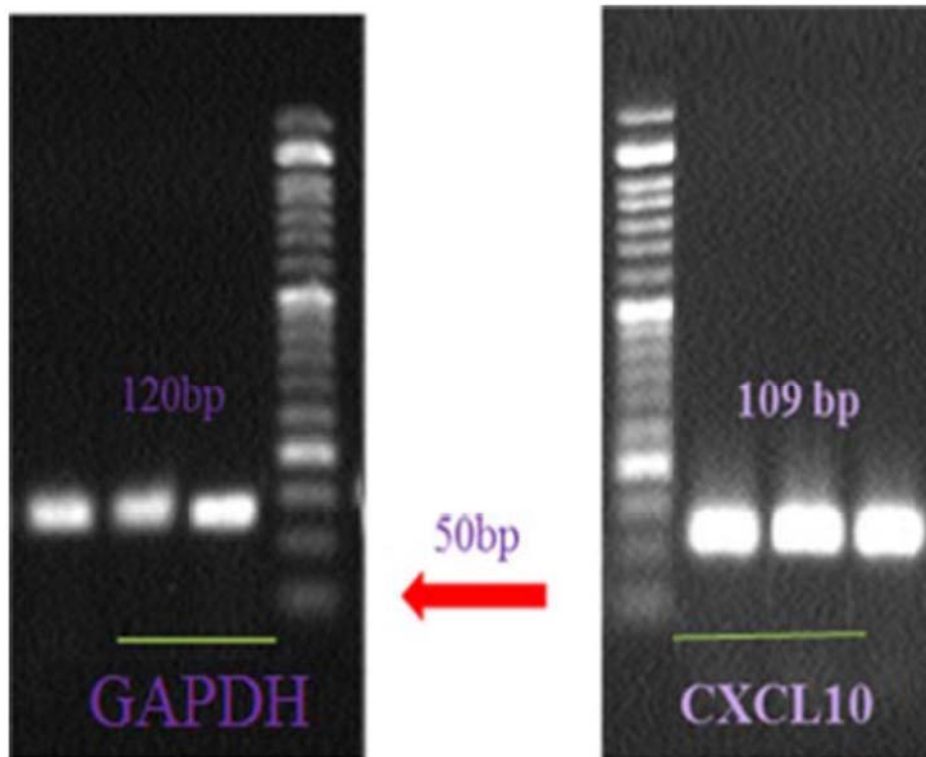


**Table 1)** Primer Sequence

<b>Gene</b>	<b>Primer Sequence</b>
<b>CXCL10</b>	For: 5'-CTGAGCCTACAGCAGAGGAAC-3' Rev: 5'-GAGAGGTACTCCTTGAATGCCAC-3'
<b>GAPDH</b>	For: 5'-TTGCCCTCAACGACCACTTT-3' Rev: 5'-TGGTCCAGGGGTCTTACTCC-3'
<b><math>\beta</math>-actin</b>	For: 5'-AACGGTGAAGGTGACAGCAGTCG-3' Rev: 5'-GGCAAGGGACTTCCTGTAACAACG-3'



**Fig.1)** CXCL10 and GAPDH Bands after Performing PCR on cDNA, made of the Tissue Sample