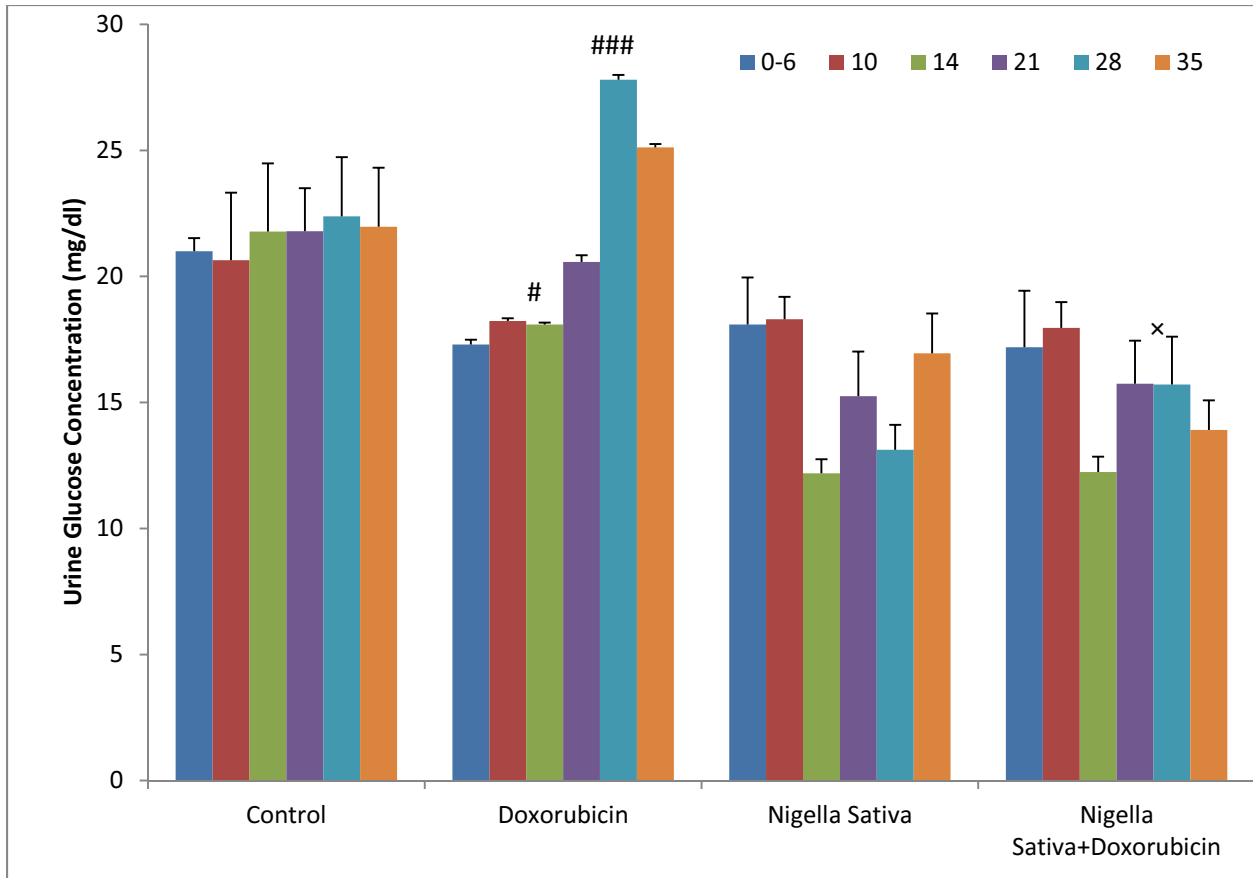


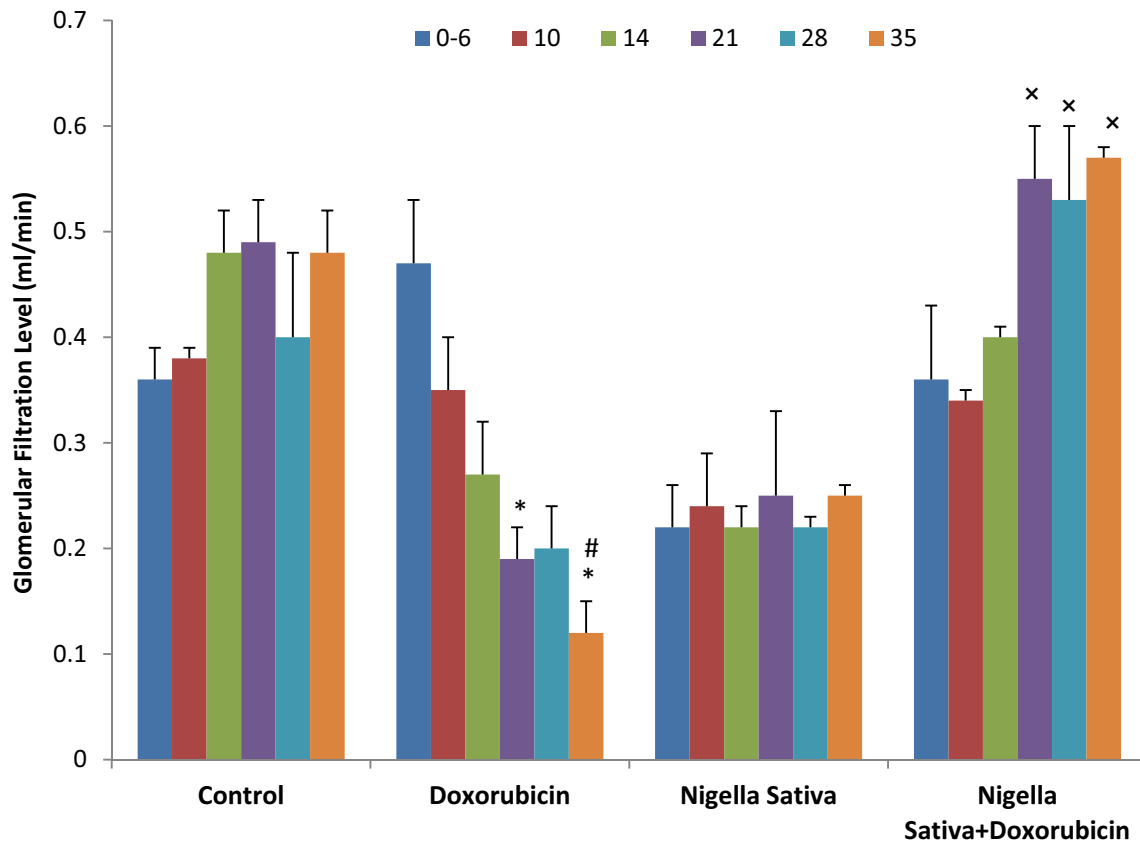
**Table 1)** Mean Serum Urea, Urea Clearance, and Serum Glucose in Different Groups (n=8 per group) Treated by Hydro-alcoholic Extract of Seeds of Nigella Sativa (200mg/kg)

Index	Control Group	Doxorubicin Group	Nigella Sativa Group	Nigella Sativa Plus Doxorubicin Group
<b>Mean Serum Urea (mg/dl)</b>				
Mean of Days Zero and 6	50.40±1.51	43.06±0.63	56.22±3.16	55.35±2.88
Day 10	52.45±2.36	62.08±0.75*	53.38±1.49	51.86±1.18
Day 14	46.85±2.29	47.32±0.74	51.66±1.59	53.53±1.90
Day 21	51.82±3.34	45.10±0.90	48.59±1.81	43.86±2.21
Day 28	54.40±3.67	46.40±1.24	50.91±1.64	57.49±2.06
Day 35	46.93±3.42	48.81±0.44	43.73±0.88	54.19±4.23
<b>Mean Urea Clearance (ml/min)</b>				
Mean of Days Zero and 6	0.47±0.06	0.63±0.14	0.29±0.02	0.28±0.08
Day 10	0.42±0.15	0.30±0.06	0.30±0.05	0.38±0.03
Day 14	0.45±0.08	0.73±0.17	0.29±0.05	0.29±0.04
Day 21	0.60±0.17	0.92±0.17	0.38±0.07	0.63±0.09
Day 28	0.48±0.12	1.03±0.20	0.28±0.03	0.52±0.01
Day 35	0.53±0.06	0.97±0.10	0.39±0.12	0.57±0.07
<b>Mean Serum Glucose (mg/dl)</b>				
Mean of Days Zero and 6	129.30±7.42	130.40±0.53	122.70±5.60	130.80±5.45
Day 10	145.80±5.77	128.20±1.35	132.20±8.67	120.70±3.35
Day 14	146.40±3.12	123.80±1.32	131.20±4.43	145.30±3.89
Day 21	143.10±9.48	107.90±0.63***	124.90±4.67	130.80±7.37
Day 28	149.00±10.92	112.60±0.91**	133.60±3.37	130.50±6.18
Day 35	140.00±6.97	137.10±2.02	138.40±12.81	120.54±3.36

\*p<0.05 showing difference with the control day in the same group; \*\*p<0.05 showing difference with the mean value of days zero and 6 inside the group; \*\*\*p<0.001 showing difference with the mean value of days zero and 6 inside the group



**Diagram 1)** Effects of Hydro-alcoholic Extract of Seeds of Nigella Sativa (200mg/kg) on the Urine Glucose Level compared to Control and Doxorubicin Groups (# $p < 0.05$  showing difference with control group; ### $p < 0.001$  showing difference with control group; x $p < 0.05$  showing difference with doxorubicin group; \* $p < 0.05$  showing difference with the mean value of days zero to 6 inside group; \*\*\* $p < 0.001$  showing difference with the mean value of days zero to 6 inside the group)



**Diagram 2)** Effects of Hydro-alcoholic Extracts of Seeds of Nigella Sativa (200mg/kg) on the Glomerular Filtration Level (ml/min) compared to Control and Doxorubicin Groups (#p<0.05 showing difference with control group; x p<0.05 showing difference with doxorubicin group; +p,0.05 showing difference with the mean value of days zero to 6 inside the group)