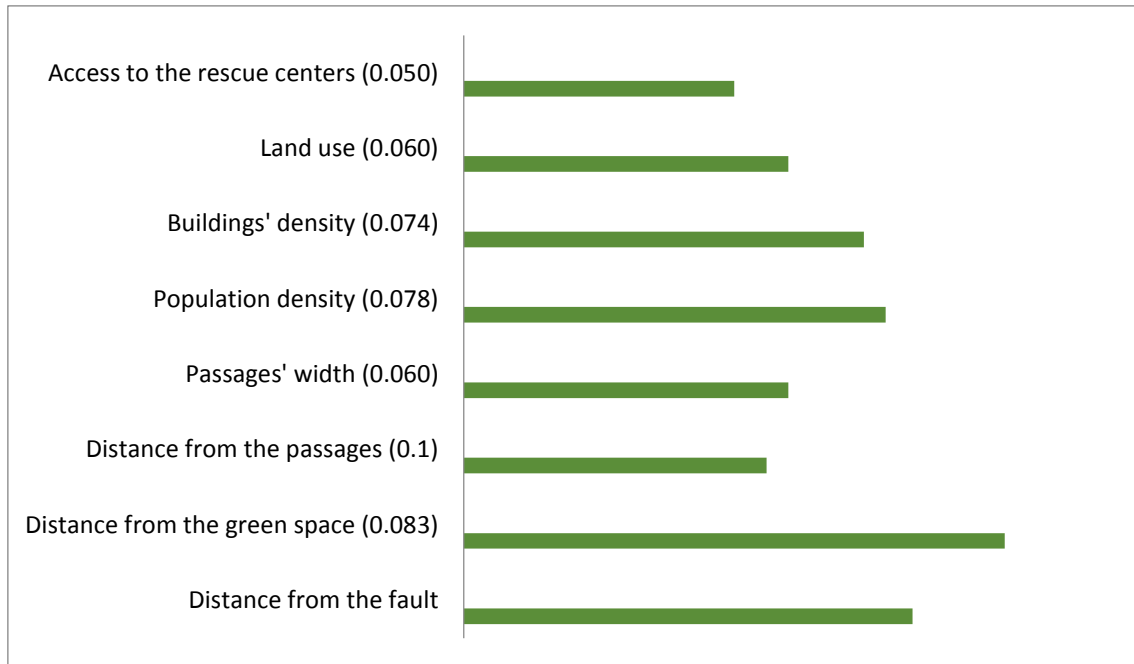
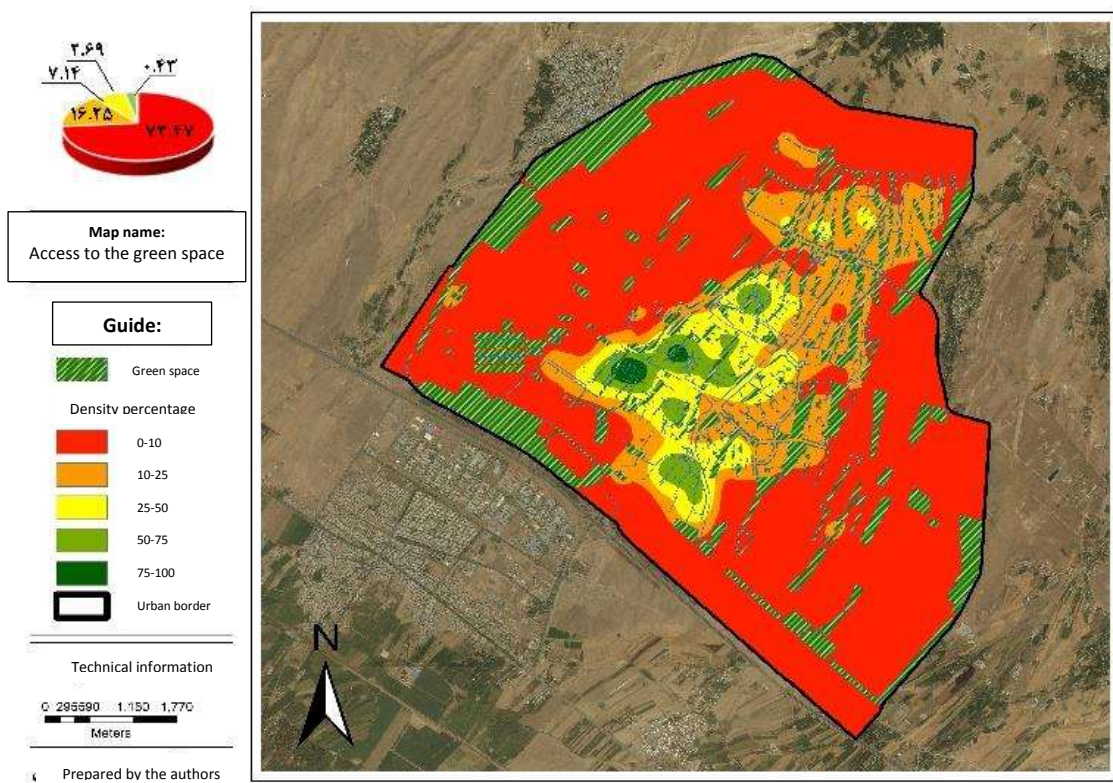


**Table 1)** chosen urban vulnerability indicators according to the elites' scoring

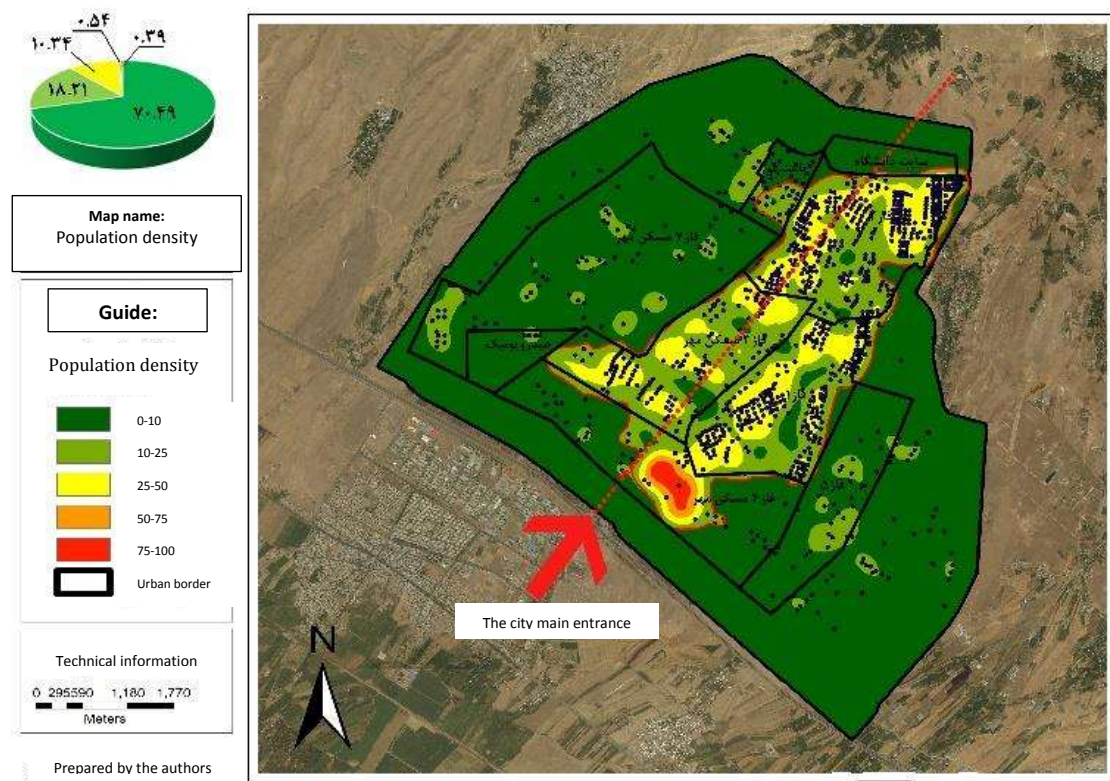
Indicators	Indicator score average	Scoring explanation
Distance from the fault	4.6	The farther away from the fault, the less vulnerable to the earthquake (Darban Astane <i>et al.</i> , 2018)
Access to the green space	4.6	The more access to the green space, the less vulnerable [Hajinejad <i>et al.</i> , 2016]
Access to the passages	4.6	The more access to the passages, the less vulnerable [Mobaraki & Kashani Asl, 2014]
Passages' width	4.2	The wider passages, the less vulnerable [Ahmadi, 1997]
Population density	4.1	The more density, the more vulnerability [Ahmadi, 1997]
Buildings density	4.2	The more density, the less vulnerability [Hajinejad <i>et al.</i> , 2016]
Land use	4.2	The more dense high-risk land uses, the more vulnerable [Darban Astane <i>et al.</i> , 2018]
Access to the emergency centers	4.1	The more access to the emergency centers, the less vulnerable [Aslani, 2018]



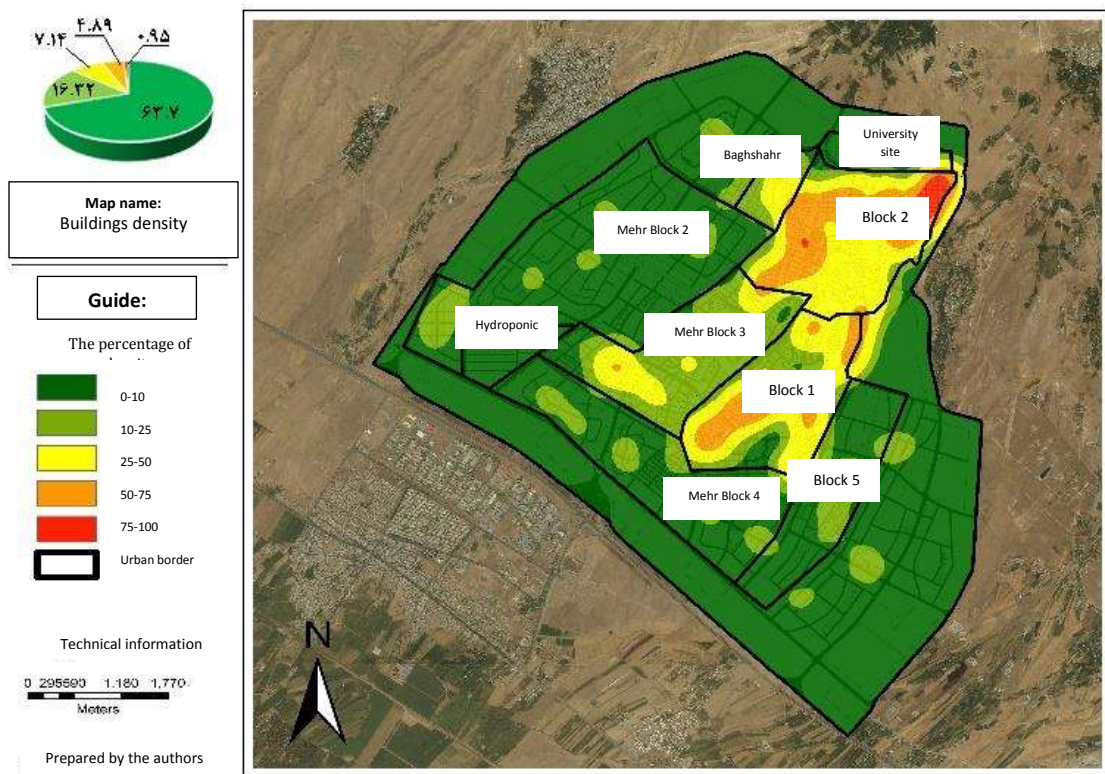
**Figure 1)** urban vulnerability evaluation indicators weighting graph using AHP method in Expert Choice



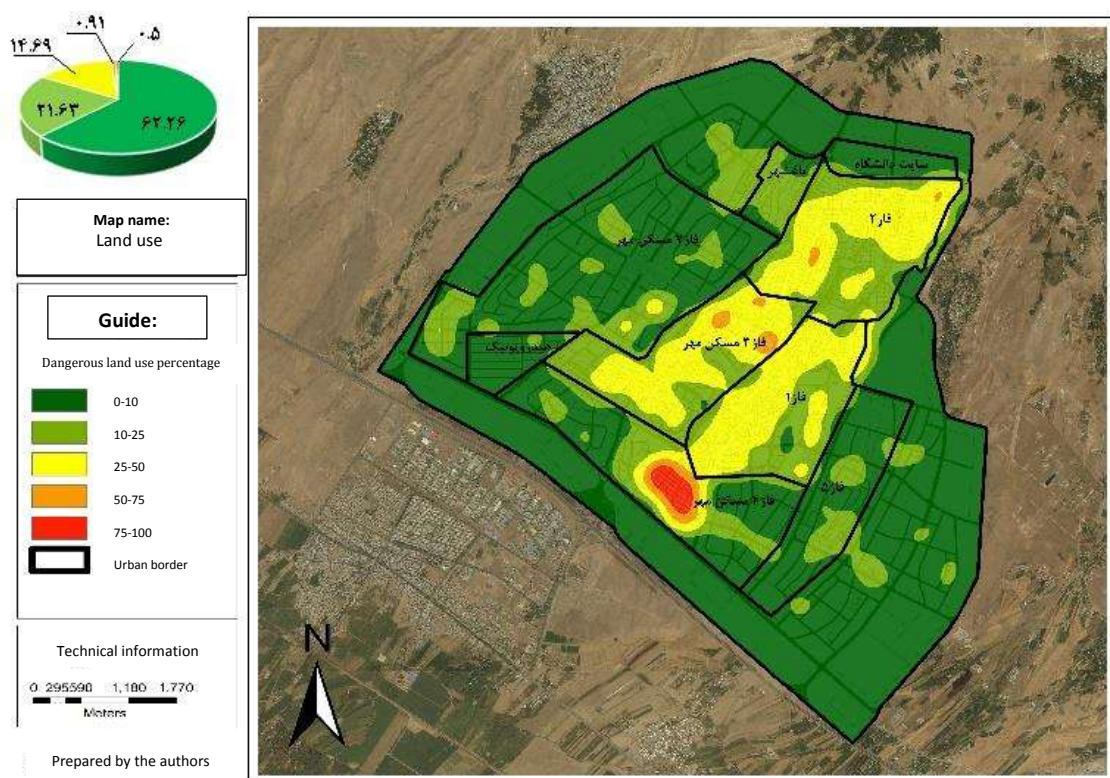
**Figure 4)** the map of access to the green space in Hashtgerd new city in GIS software



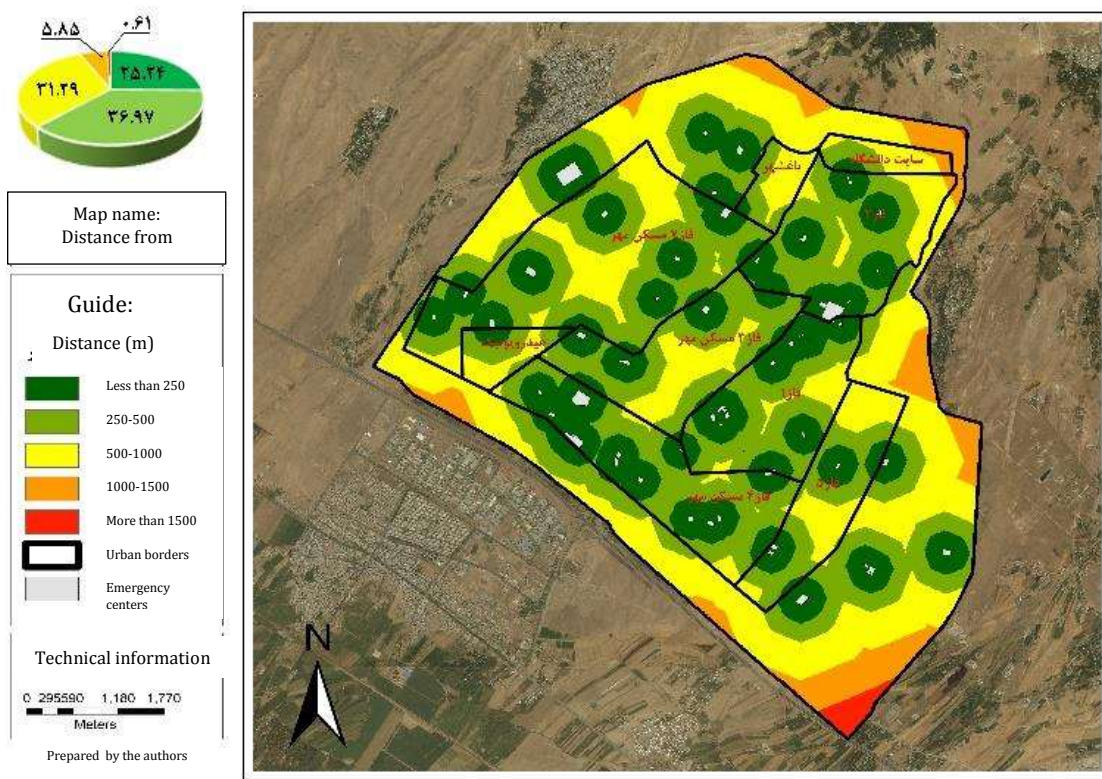
**Figure 5)** the population density in Hashtgerd new city in GIS software



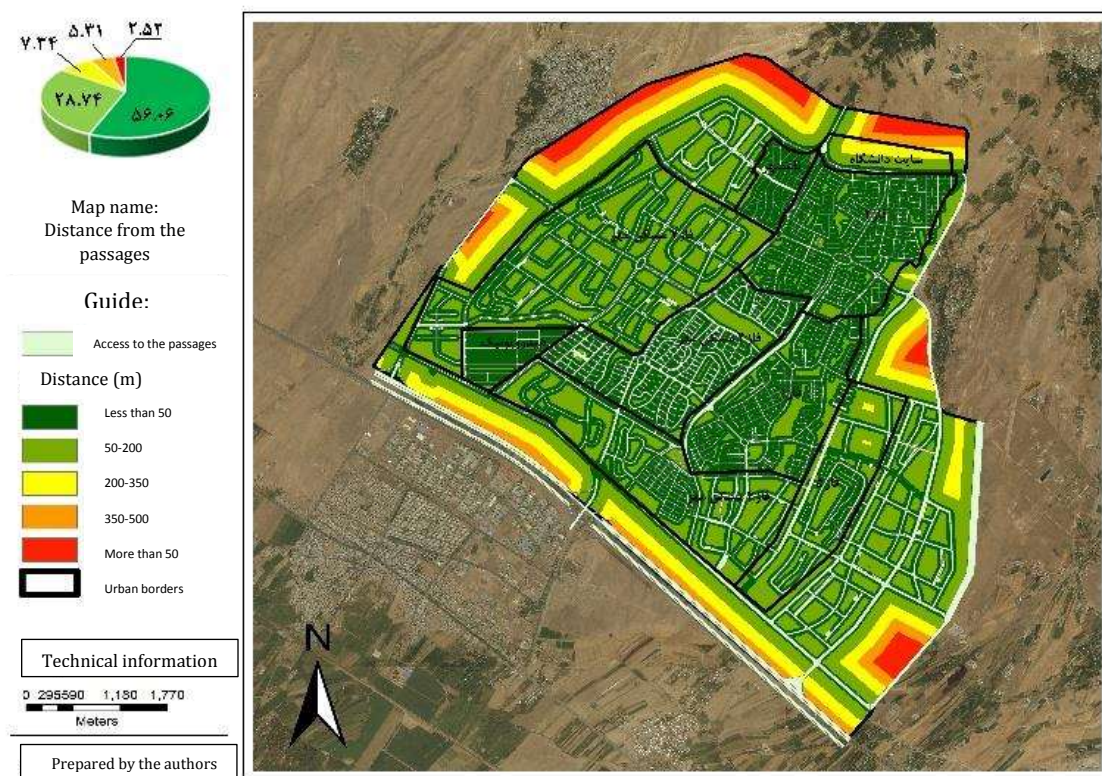
**Figure 6)** buildings density map in hashtgerd new city in GIS software



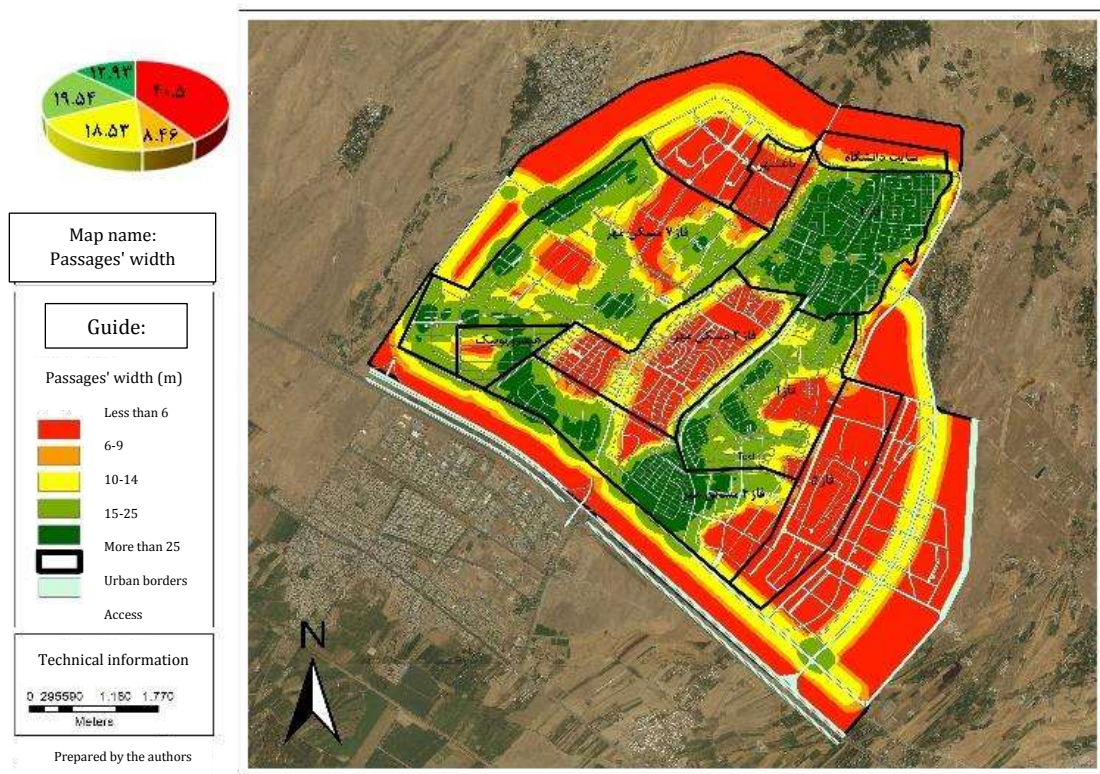
**Figure 7)** dangerous land uses density in Hashtgerd new city in GIS software



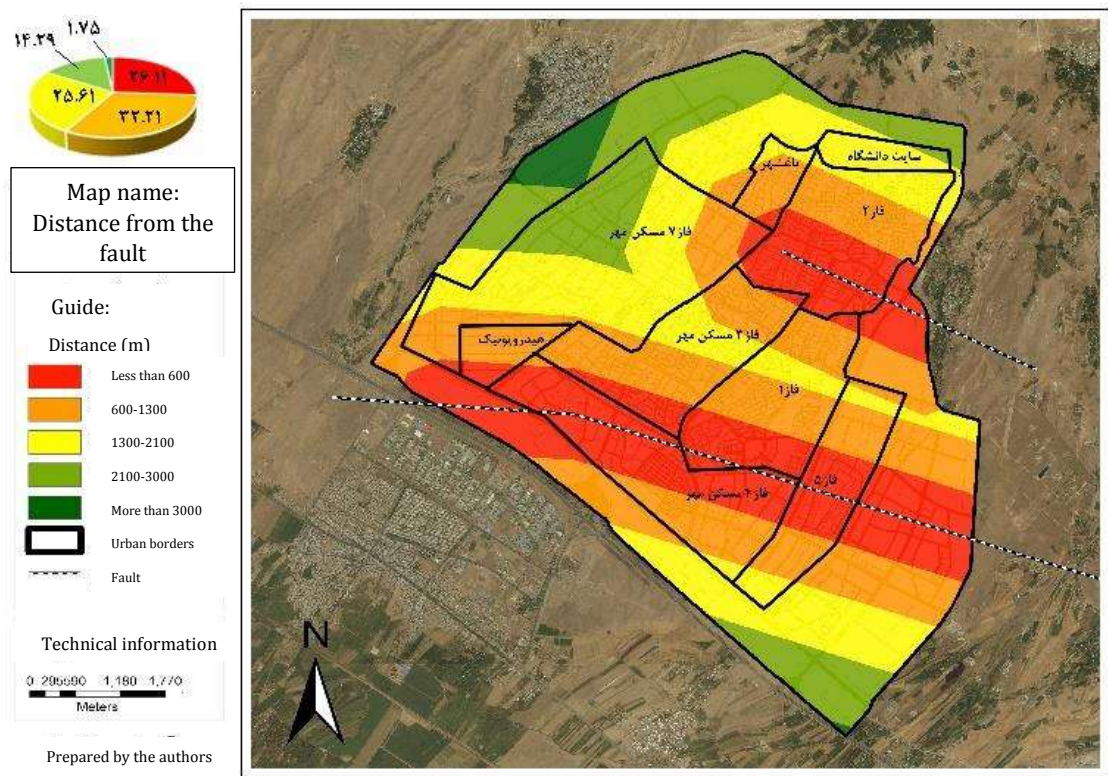
**Figure 8)** the map of distance from emergency centers in Hashtgerd in GIS software



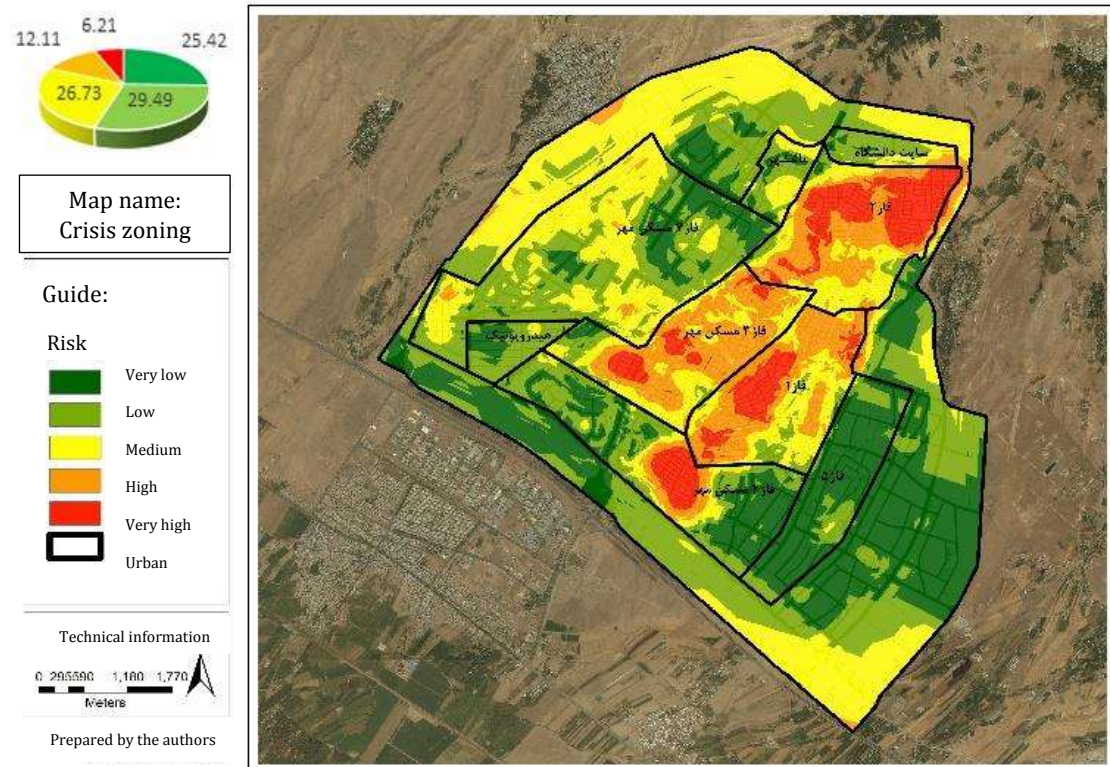
**Figure 9)** Distance from the passages in Hashtgerd in GIS software



**Figure 10)** the passages' width map in Hashtgerd in GIS software



**Figure 11)** distance from the faults in Hashtgerd in GIS software



**Figure 12)** the crisis zoning in Hashtgerd in GIS software

**Table 2)** crisis zoning in Hashtgerd in 2019

Number	Vulnerability	Area ( $km^2$ )	Area percentage
1	Very low	10.892875	25.42
2	Low	12.63773	29.49
3	Medium	11.454354	26.73
4	High	5.19245	12.11
5	Very high	2.664255	6.21