

Figure 4) AF (asymmetry Factor) index map in the studied area

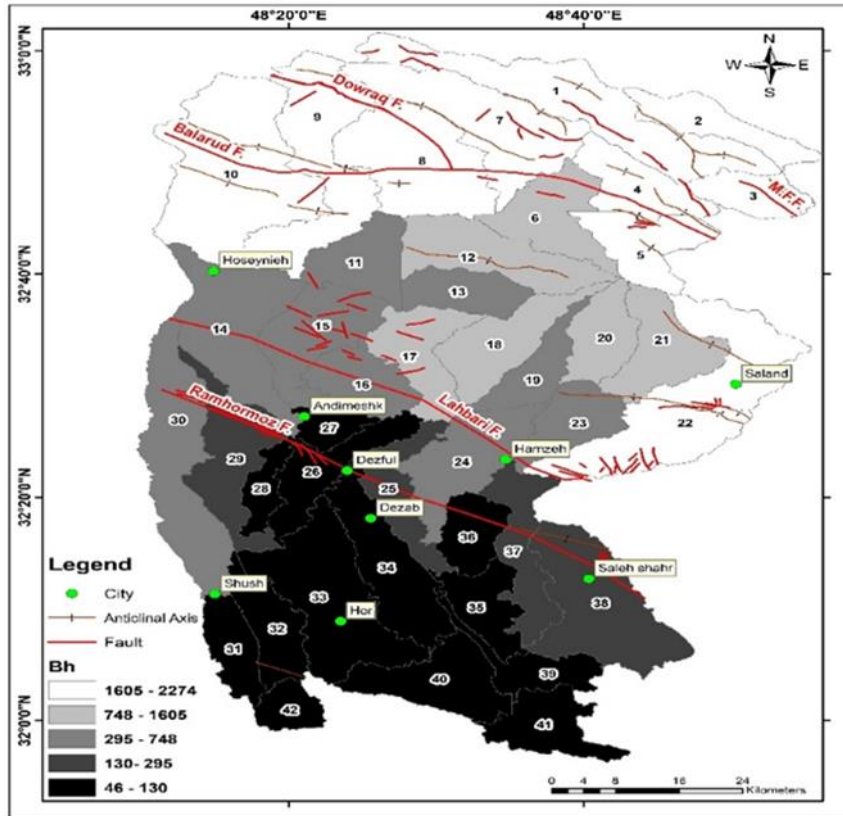


Figure 5) Bh (Relative Relief) index map in the studied area

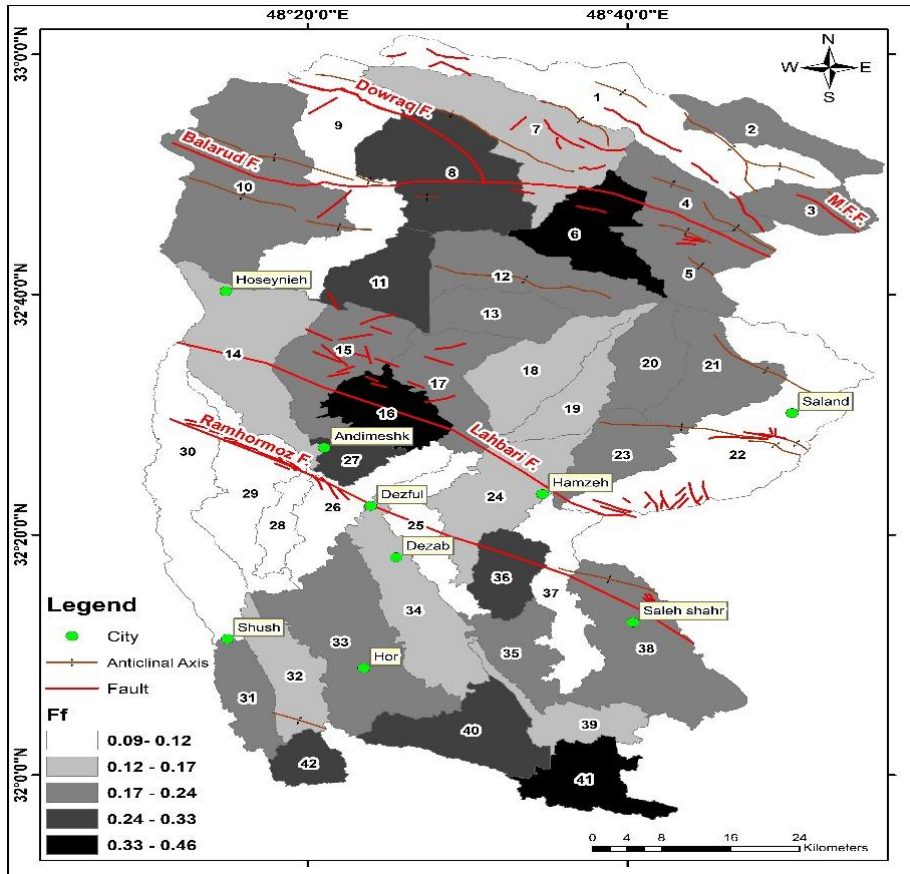


Figure 6) Ff (Form factor) index map in the studied area

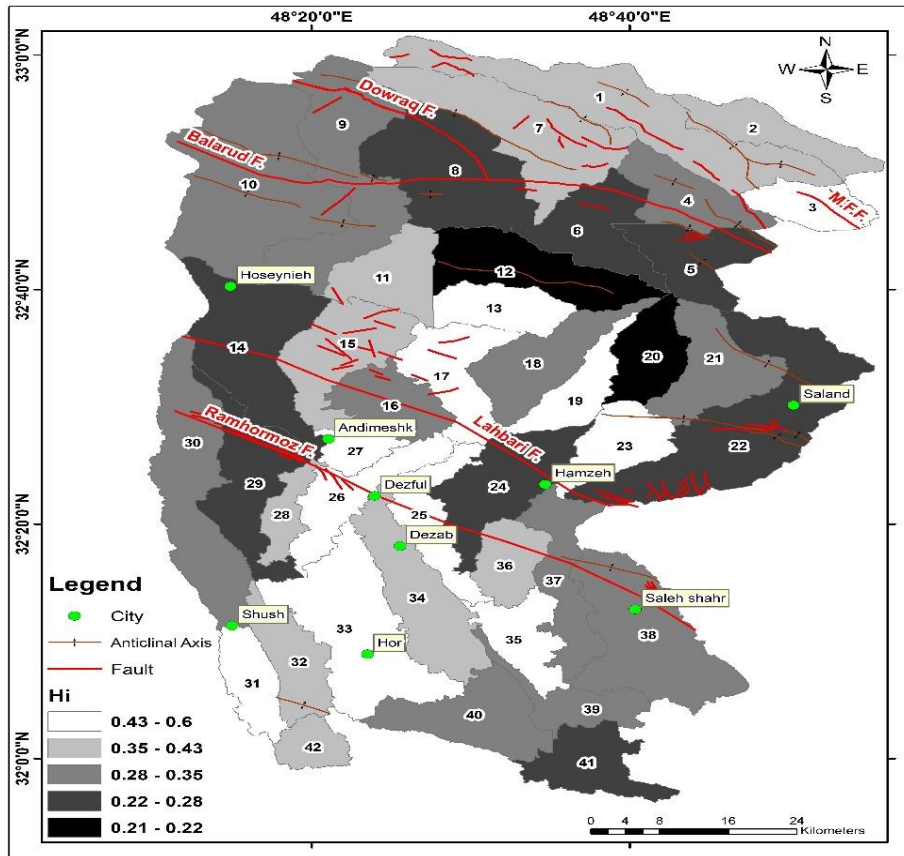
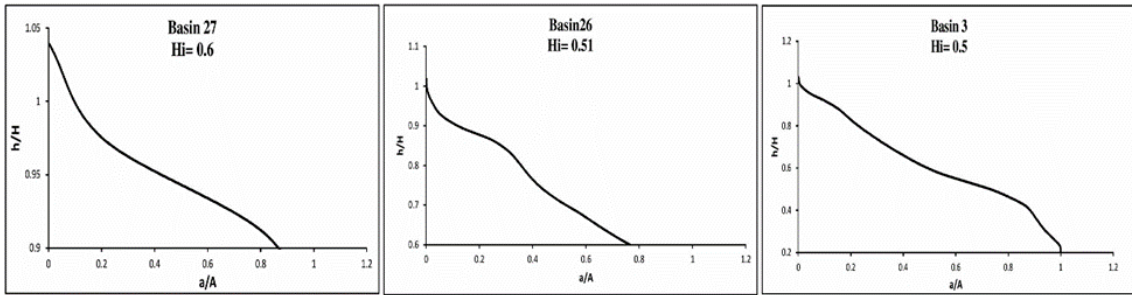


Figure 7) Hi (hypsometric integral and curves) index map in the studied area



**Figure 8)** maximum meta-measurement curve in basins 3, 26, and 27

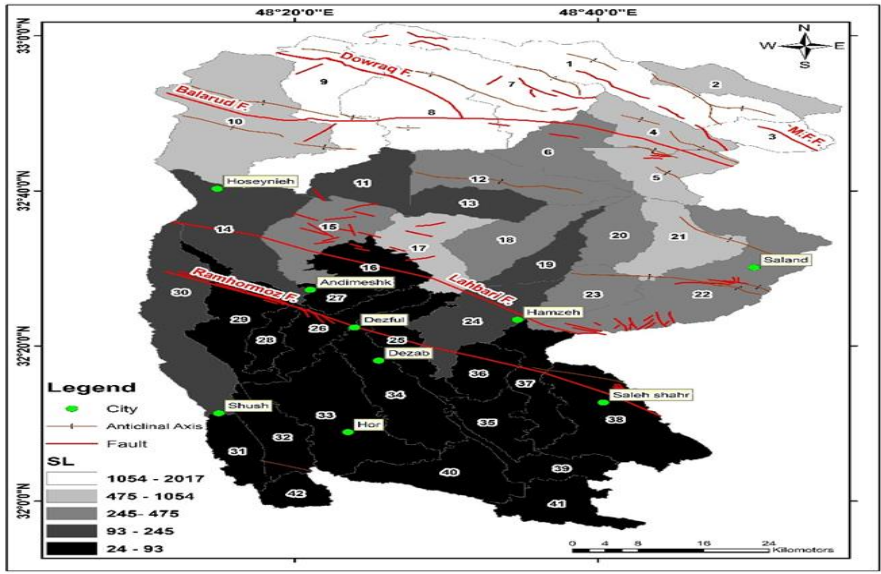


Figure9) SL (Stream Length gradient) map in the studied area

**Table 1)** five measured indices' values and the class of tectonic activity in the studied area

Basin Number	Asymmetry factor index	Relative relief index	Form factor index	Hypsometric Integral index	Stream length gradient	Index of active tectonics	Active tectonics class
1	8.4	2108	0.12	0.38	1452	1.5	1
2	15.56	2051	0.19	0.36	693	1.5	1
3	2.7	2179	0.24	0.5	2017	1.75	2
4	6.64	1909	0.21	0.33	765	2	2
5	1.73	1985	0.23	0.26	831	2.25	3
6	1.66	1307	0.39	0.22	455	2.5	3
7	17.13	2167	0.14	0.41	1200	1	1
8	17.78	2015	0.3	0.25	1238	2	2
9	14.87	2274	0.12	0.3	1054	1.75	2
10	3.9	2059	0.2	0.28	815	2.25	3
11	35.78	656	0.33	0.38	180	1.75	2
12	24.81	1160	0.2	0.21	333	1.75	2
13	10.94	582	0.22	0.45	128	1.75	2
14	6.31	704	0.15	0.25	150	2.25	3
15	22.16	704	0.2	0.37	245	1.5	1
16	31.07	490	0.4	0.32	78	2	2
17	22.25	748	0.21	0.49	795	1.25	1
18	16.15	1125	0.16	0.28	277	1.25	1
19	6.57	621	0.13	0.43	223	1.75	2
20	4.78	1193	0.24	0.21	303	2.25	3
21	38.4	1168	0.21	0.31	475	1.5	1
22	8.29	1605	0.11	0.27	386	2	2
23	20.02	591	0.18	0.43	284	1.5	1
24	3.54	486	0.17	0.22	122	2.25	3
25	7.78	130	0.09	0.49	45	2	2
26	9.8	101	0.12	0.51	40	1.75	2
27	16.94	46	0.29	0.6	56	2	2
28	13.36	92	0.12	0.4	24	1.75	2
29	2.63	222	0.1	0.26	79	2.5	3
30	11.97	295	0.1	0.3	93	1.75	2
31	0.34	68	0.18	0.47	45	2.25	3
32	25.78	82	0.15	0.4	37	1.5	1
33	22.06	95	0.24	0.48	26	1.75	2
34	11.97	119	0.13	0.39	43	1.75	2
35	27.86	115	0.22	0.48	29	1.75	2
36	10.82	116	0.28	0.37	33	2.25	3
37	5.37	248	0.09	0.31	57	2.25	3
38	16.97	204	0.19	0.31	35	2	2
39	32.94	103	0.13	0.29	42	1.75	2
40	8.54	105	0.28	0.34	33	2.75	4
41	30.46	100	0.46	0.27	38	2.5	3

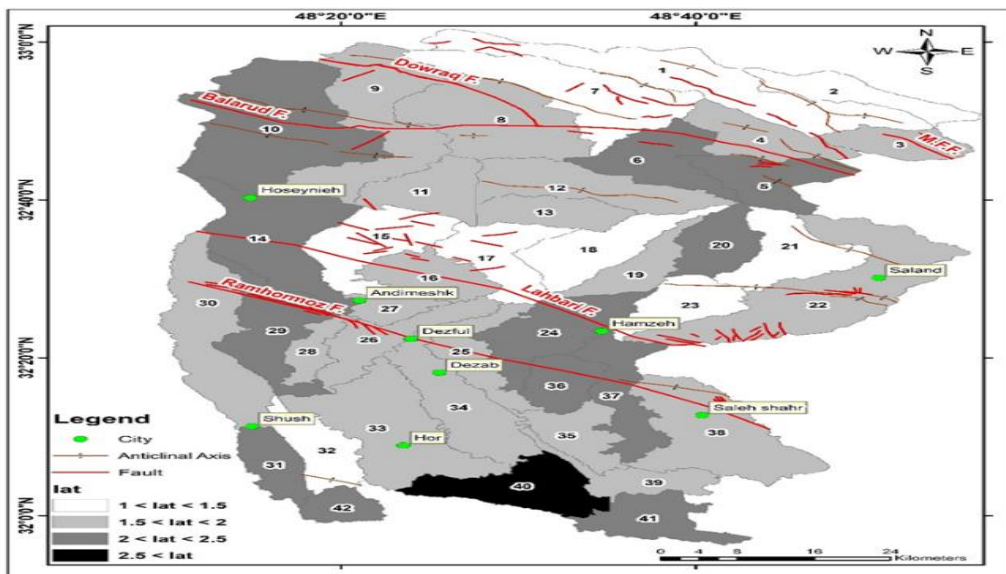


Figure 10) Iat (Index of active tectonics) map in the studied area