

**Figure 1.** The proposed model

**Table 2.** The absolute and relative frequency of respondents' demographic information (n = 357)

<b>Demographic information</b>	<b>No.</b>	<b>%</b>
<b>Gender</b>		
Male	264	73.9
Female	93	26.1
<b>Age group (year)</b>		
20-30	79	22.1
31-40	140	39.2
41-50	97	27.2
Over 50	41	11.5
<b>Education</b>		
Diploma	99	27.7
Bachelor	190	53.2
Masters	14	3.9
PhD	54	15.1

**Table 3.** Convergent validity index of the measurement model

<b>Variables</b>	<b>Cronbach's alpha coefficients</b>	<b>AVE</b>	<b>Composite reliability</b>
<b>Factors related to the recipient of health services or the recipient</b>	0.90	0.63	0.92
<b>Factors associated with health service or intellectual processing</b>	0.88	0.76	0.89
<b>Factors associated with provider and receiver of the healthcare service</b>	0.87	0.79	0.63
<b>Acceptance of e-health services</b>	0.92	0.90	0.91

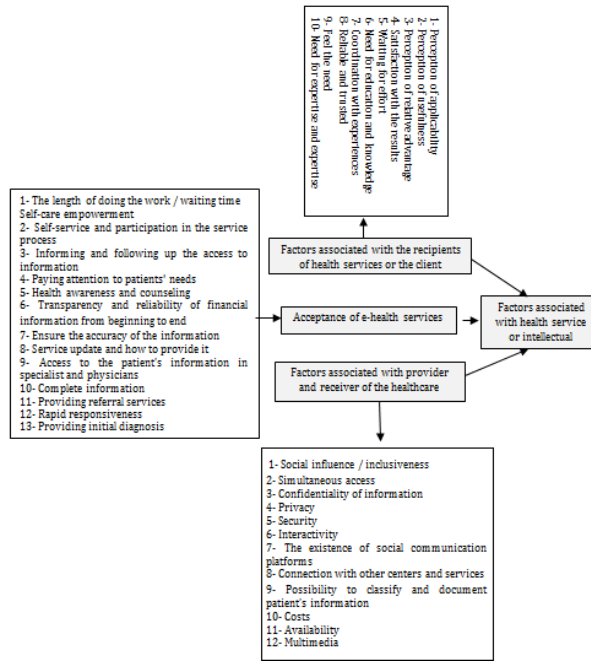


**Table 4.** The mean scores and matrix of correlation coefficients of variables

<b>Variables</b>	<b>Mean scores</b>	<b>1</b>	<b>2</b>	<b>3</b>
<b>1- Factors associated with the recipients of health services or the client</b>	4.47±0.89	1		
<b>2- Factors associated with health service or intellectual processing</b>	4.47±0.89	0.874	1	
<b>3- Factors associated with provider and receiver of the healthcare service</b>	4.47±0.89	0.845	0.871	1
<b>4- Acceptance of e-health services</b>	4.47±0.89	0.869	0.890	0.950

**Table 5.** Divergent validity index of the measurement model

<b>Connections</b>	<b>Path coefficient</b>	<b>t</b>	<b>Result</b>
<b>Factors associated with the recipients of health services or the client ← Acceptance of e-health services</b>	0.609	9.955	Approved
<b>Factors associated with health service or intellectual processing ← Acceptance of e-health services</b>	0.460	5.206	Approved
<b>Factors associated with provider and receiver of the healthcare service ← Acceptance of e-health services</b>	0.362	3.350	Approved



**Figure 2.** The final model of the research