

Table 1) Evaluation of Different Variables in the Pregnant Mice Receiving Hydro-alcoholic Extract of Capparis Spinosa compared to Control Group (n=8 per group)

Variables	Control Group	200mg/kg Extract Doses	400mg/kg Extract Doses	800 mg/kg Extract Doses
Mice Mean Weight (g)				
Day Zero of Pregnancy	31.25±0.96	31.00±1.15	30.75±0.96	31.14±0.90
Day Eighteen of Pregnancy	59.50±1.29	59.00±1.26	58.75±1.26	*56.50±1.05
Weight Difference at Zero and Eighteen Days	28.25±0.50	28.00±0.82	28.00±0.82	*25.50±1.05
Specifications of fetus				
Number of Fetuses	47	48	50	68
Number of Dead Fetuses	0	0	0	0
Number of Absorbed Fetuses	0	0	0	0
Fetus Weight (g)	1.19±0.07	1.20±0.05	1.19±0.07	*1.15±0.14
Fetus Weight (mm)	22.85±0.76	22.56±0.77	22.44±0.75	*22.30±1.25

(*p <0.05 compared to control group)

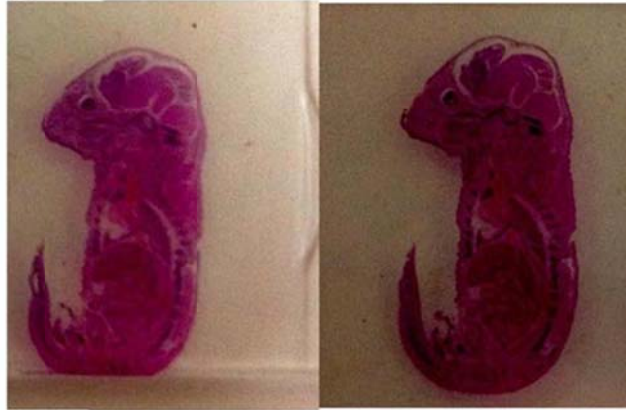
A**B**

Fig. 1) A. Face Comparison between Fetus in Control Group (Right) and Fetus in Group Receiving 800 mg/kg Extract of Capparis Spinosa (Left): No abnormality was observed in the skeletal system. B. Alizarin Red Staining and Comparison between Skeletal System of Fetus in Control Group (Right) and the Skeletal System of Fetus in the Group Receiving 800 mg/kg Capparis Spinosa Leaf Extract (Left): The tail is normal and there is no difference between the appearance of curvature of the spine and those of fetus in control group.