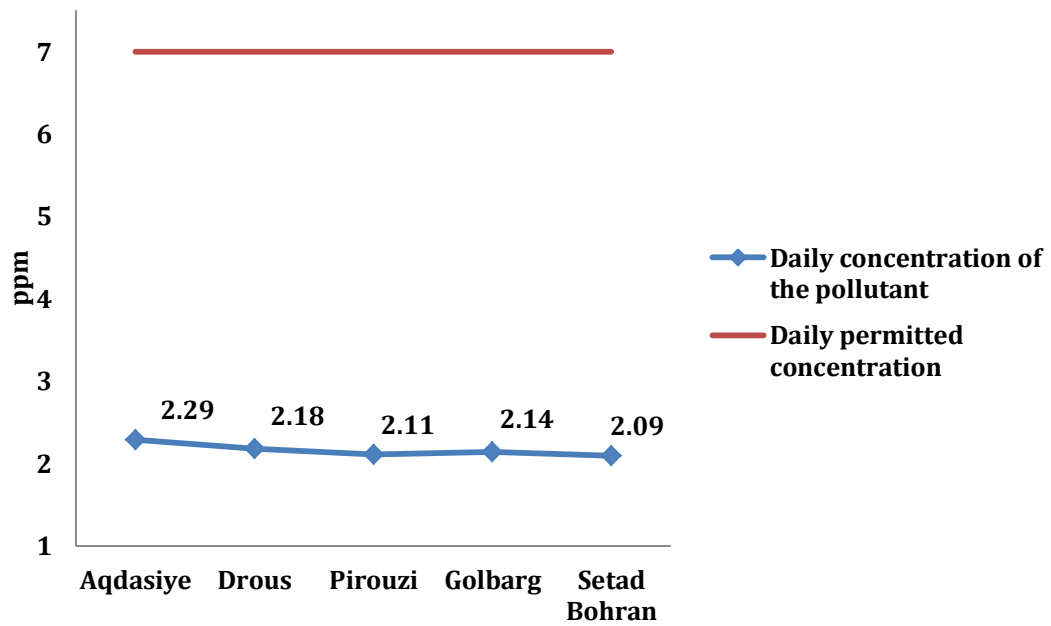
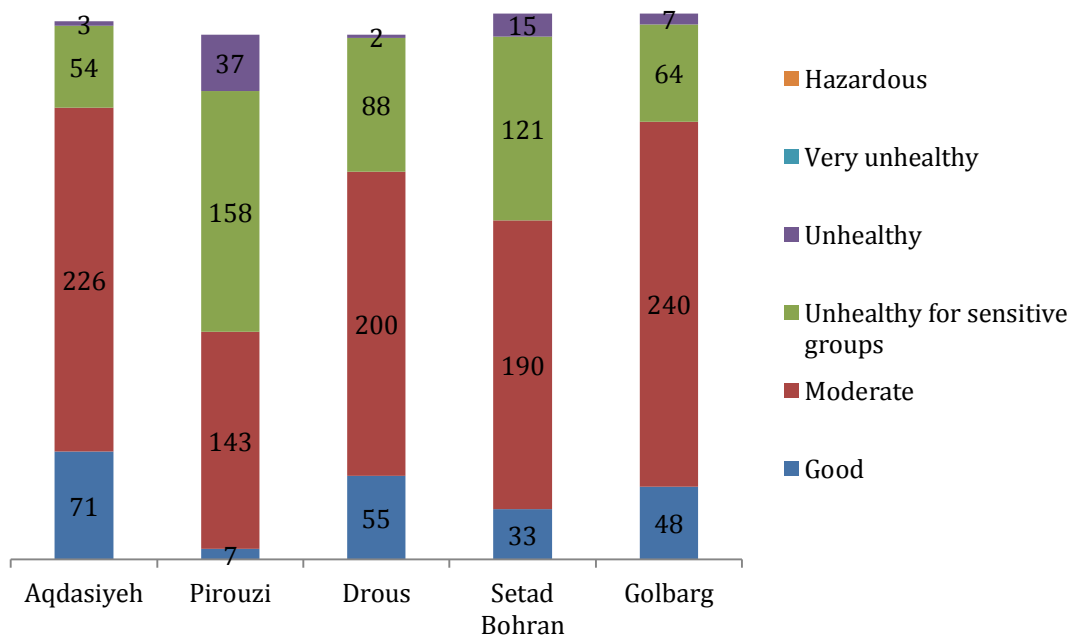


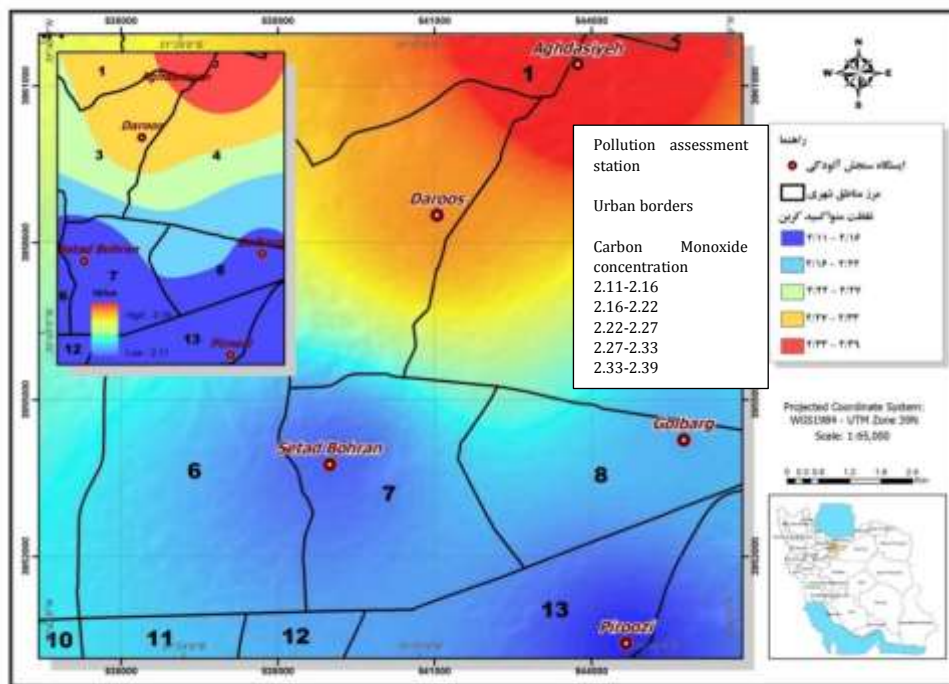
**Chart 1)** the hourly Carbon Monoxide concentration in 2018 in different seasons



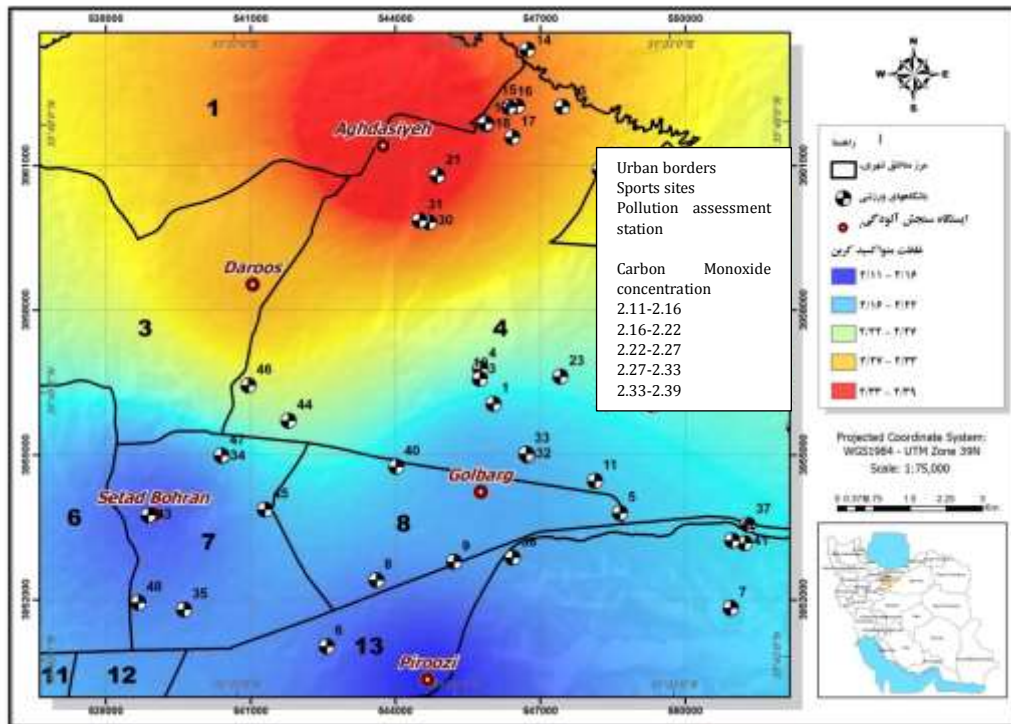
**Chart 3:** the average daily concentration of Carbon Monoxide in comparison to the permitted amount (2018-2019)



**Chart 4)** a comparison of the different grades of the air quality (PSI/AQI) in the studied stations in 2018



**Figure 1)** Carbon Monoxide concentration and distribution in the studied area in 2018



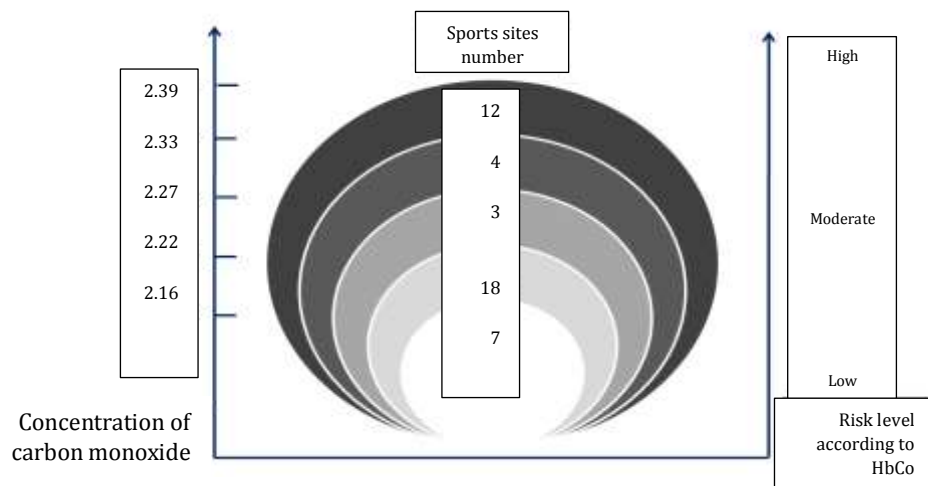
**Figure 2)** sports sites locations map in the studied area in relation with Carbon Monoxide

**Table 5) consequence, exposure, and probability**

Scenarios	Aspect	Possible consequences	Risk			Risk grade	Risk level
			Consequences	Exposure	Probability		
<b>A</b>	CO emission	Poisoning/ efficiency decrease	3	4	2	24	Low
<b>B</b>	All pollutants emission	Poisoning/ efficiency decrease	6	5	3	90	moderate

**Table 6)** a summary of the risk grades and the needed managerial practices

<b>Risk level</b>	<b>Practice</b>	<b>Risk grade</b>
<b>&gt;200</b>	Immediate actions to control the hazard	High risk
<b>90-199</b>	Emergency (needed decisions should be made as soon as possible)	Moderate risk
<b>&lt;89</b>	The hazard is under control	Low risk



**Figure3)** the relationship between the number of sports sites and CO environmental risk in the studied area