

Figure 2) space distribution of the glacial cirques in Shahdad river basin

Table 1) distribution of glacial cirques in Shahdad river basin

Altitude levels (m)	Cirques number	Percentage	Cumulative percentage
2500-2600	11	10.5	10.5
2600-2700	12	11.5	22
2700-2800	16	15.3	37.3
2800-2900	17	16.3	53.6
2900-3000	13	12.5	66.1
3000-3100	11	10.5	76.6
3100-3200	10	9.6	86.2
3200-3300	7	6.7	92.9
3300-3400	2	1.9	94.8
3400-3500	4	3.8	98.6
3500-3600	1	0.9	100
Total	104	100	100

Table 2) the studied stations' information (from 2010/1/1 to 2019/12/31)

Information	Kerman	Shahdad	Bam	Lale zar	Zarand	Rafsanjan	Bardsir
Longitude (degree/minute)	56/96	57/68	58/35	56/83	56/56	55/93	56/57
Latitude (degree/minute)	20/25	30/41	29/10	29/51	30/80	30/38	29/94
Altitude (m)	1755	430	1076	2775	1555	1469	2040
Present temperature mean (C)	17.41	28.62	24.45	12.48	20.22	19.60	14.02
Past temperature mean (C)	4.25	25.4	16.38	-8.33	8.56	8.59	-1.28
Present precipitation mean (mm)	112.29	31.18	60.20	174.43	98.72	85.91	132.24
Past precipitation mean (mm)	223.5	5.44	128.41	350.36	197.30	179.04	261.57

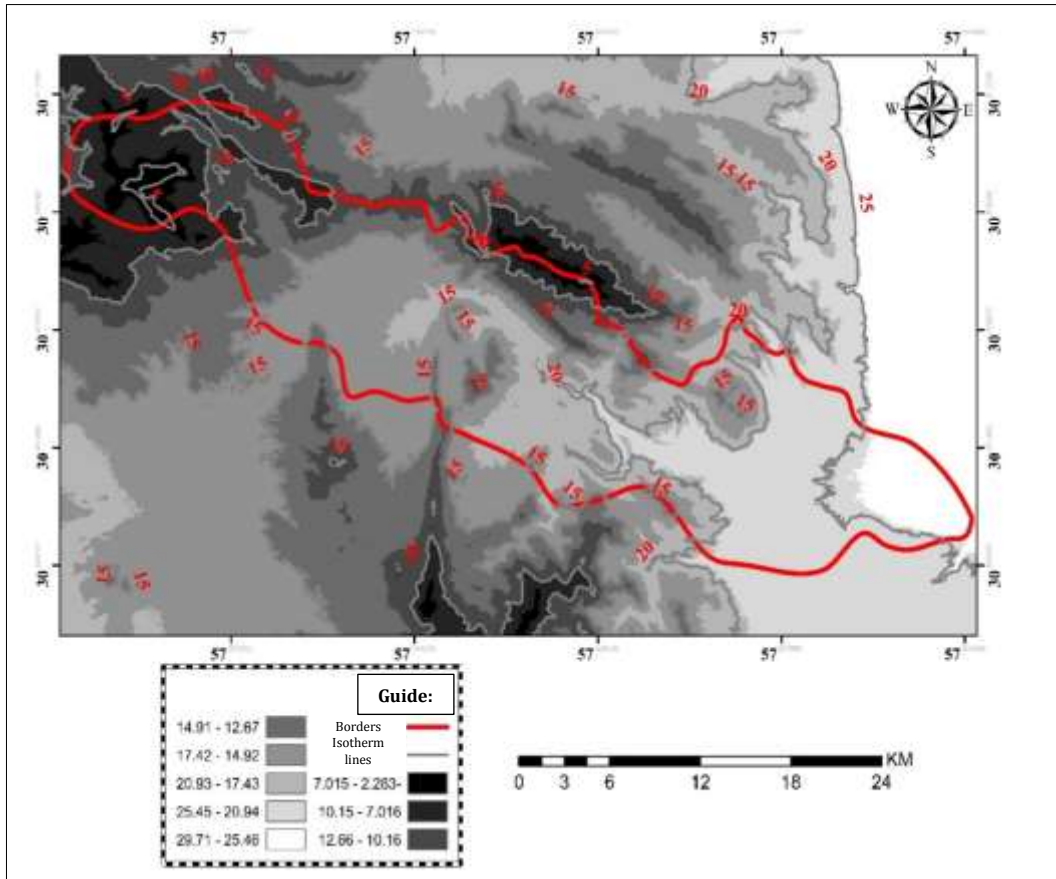


Figure 3) present isotherm map in the studied area

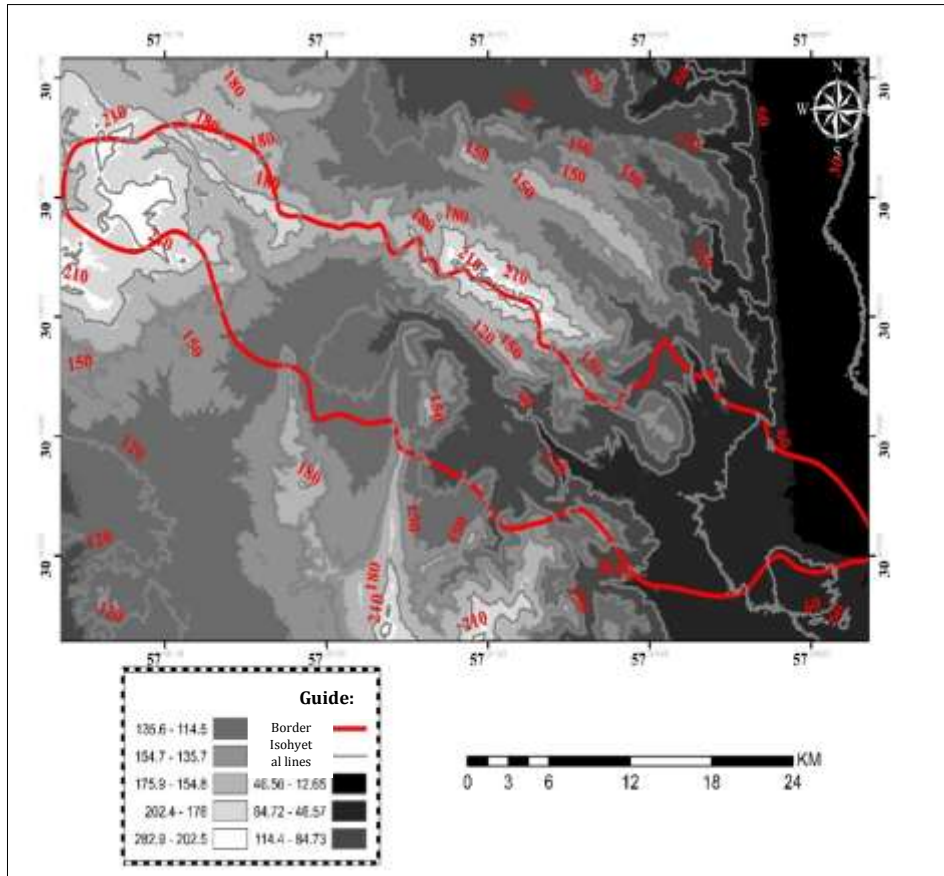


Figure 4) present isohyetal map in the studied area

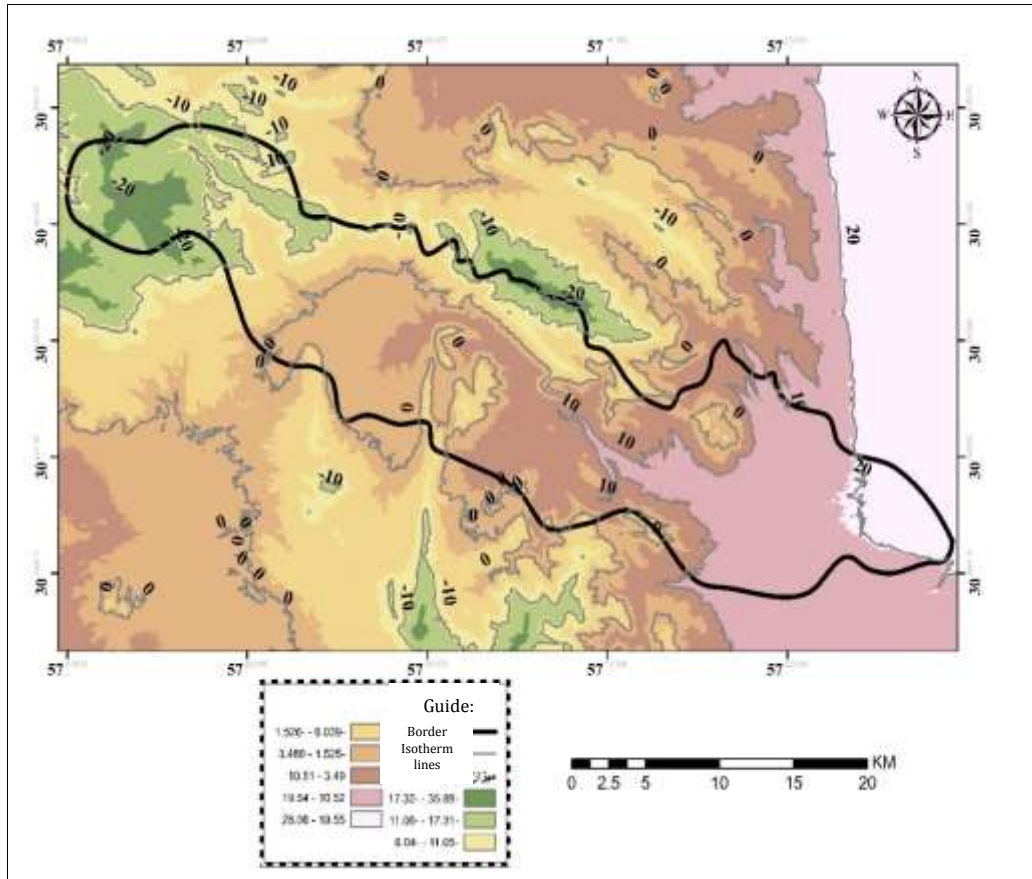


Figure 5) past isotherm map in the studied area in glacier domains

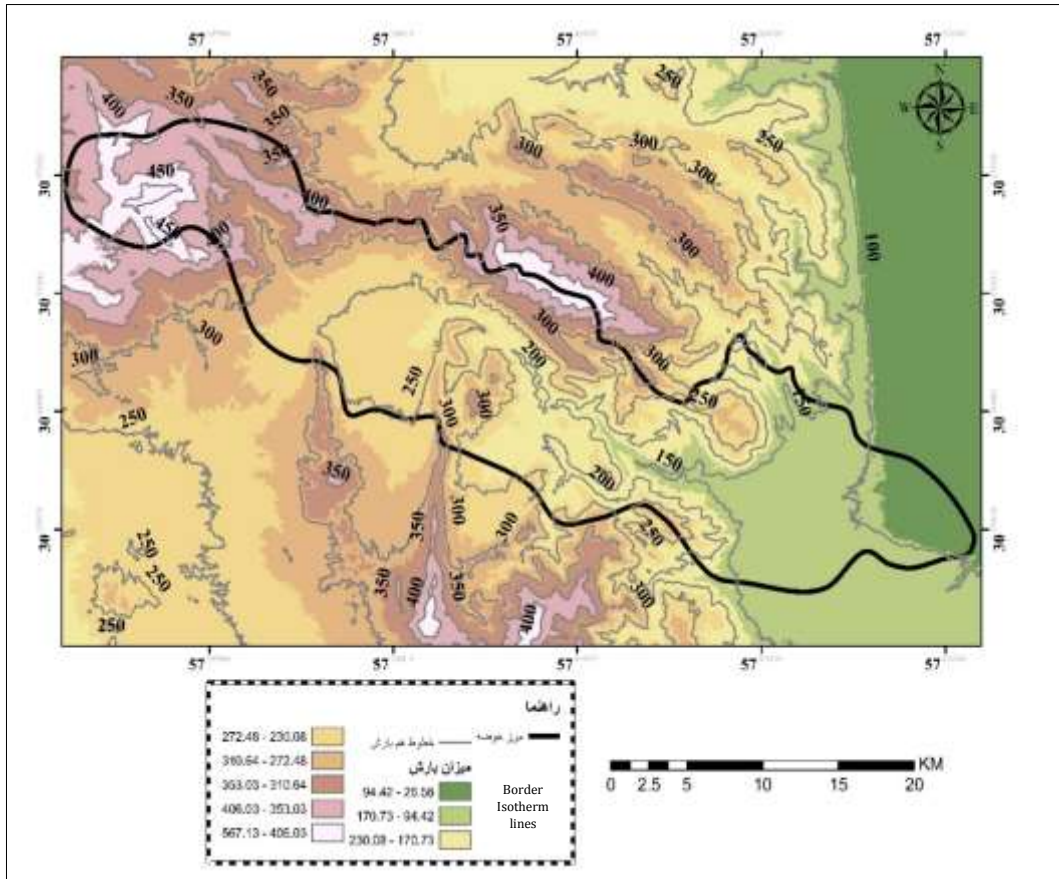


Figure 6) past isohyetal maps in the studied area in domains of the glaciers

Table 3) results extracted from isotherm and isohyetal map in past and present

Time	Maximum	Minimum
Around the basin		
Present temperature	29.70	-2.26
Past temperature	28.06	-35.88
Present precipitation	282.92	12.64
Past precipitation	567.13	26.58
Inside the basin		
Present temperature	25	5
Past temperature	20	-20
Present precipitation	210	60
Past precipitation	150	450

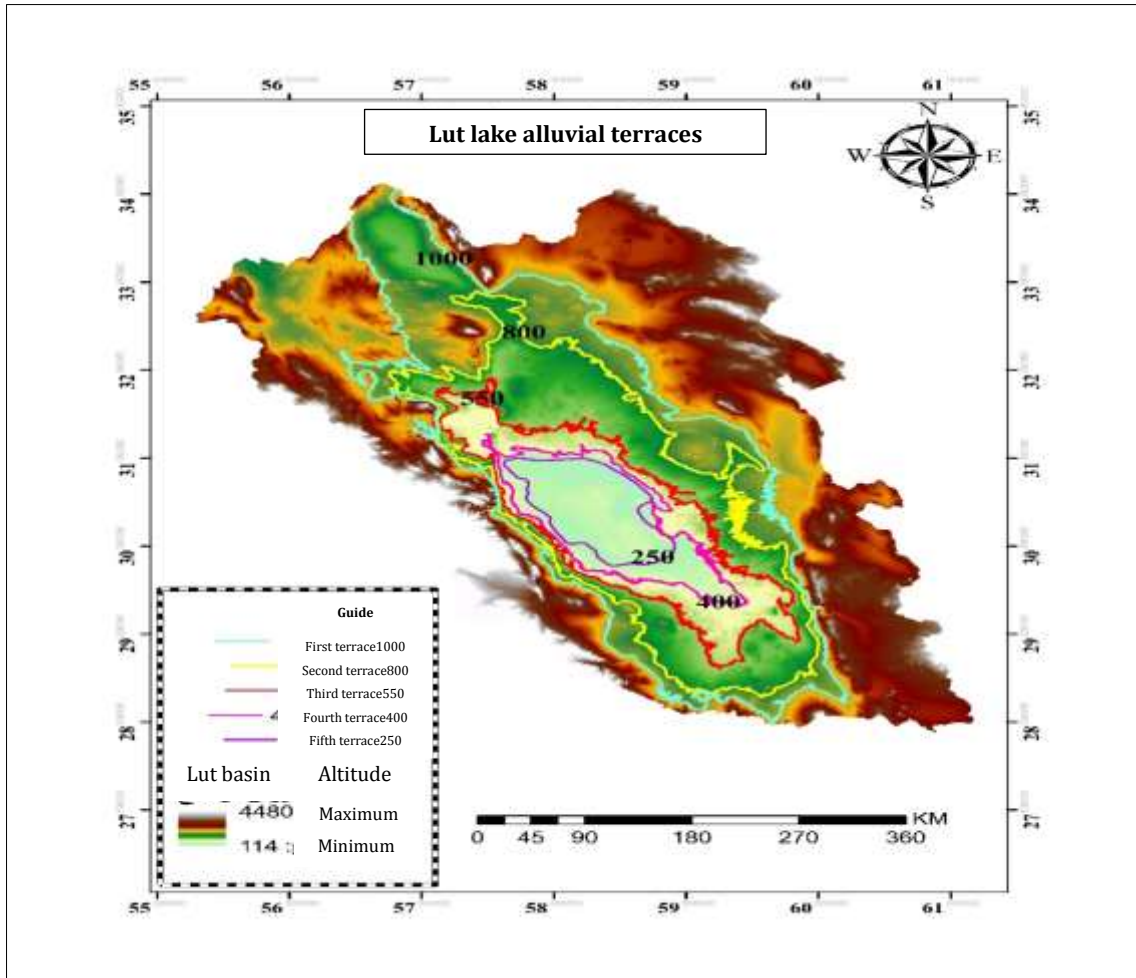


Figure 7) alluvial terraces map in Lut Lake