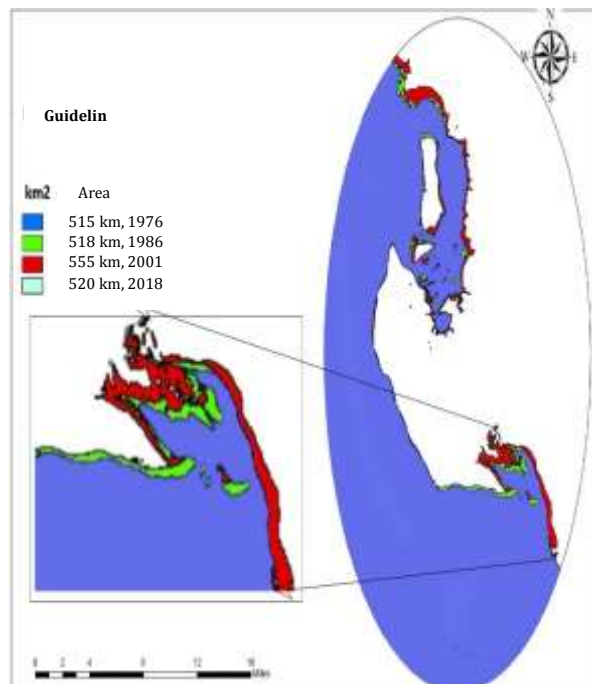
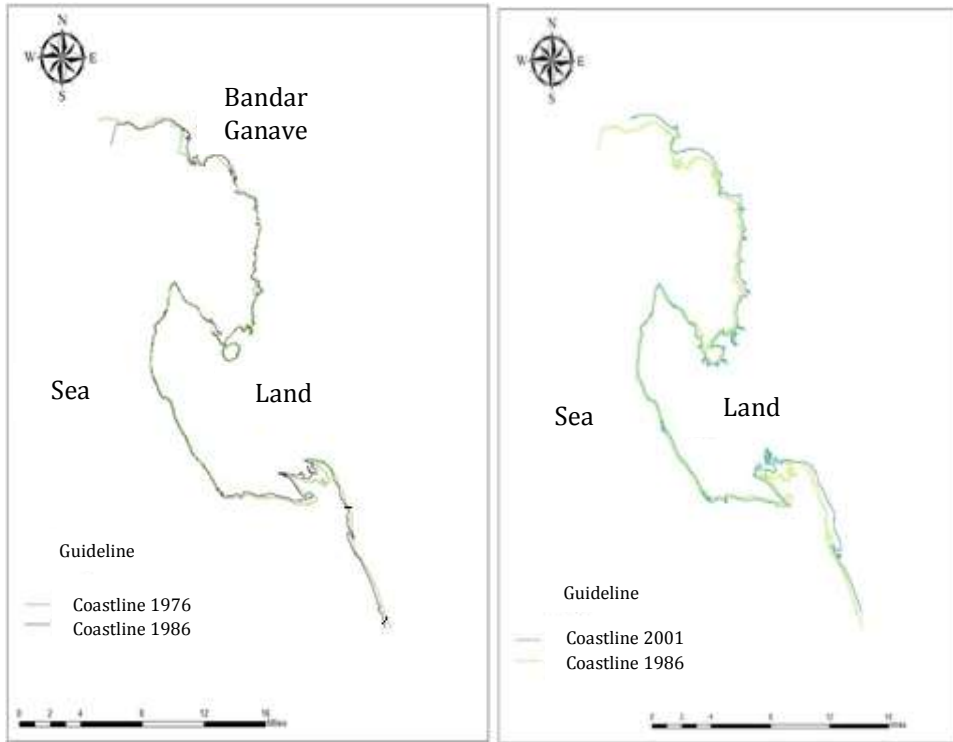


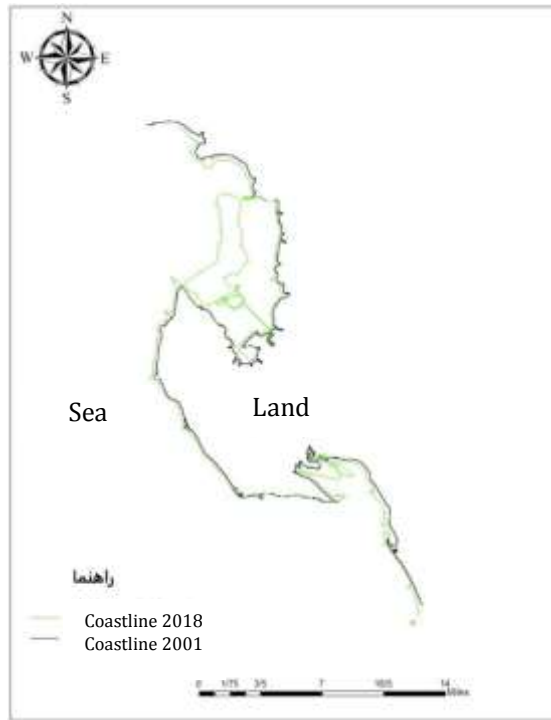
**Figure 4)** the map of Bushehr coastline changes in 1976, 1986, 2001, and 2018 (Drawn by GIS)



**Figure 5)** the transformed area estimation according to the coastline changes from 1976 to 2018 (drawn in GIS software)



**Figure 6)** the comparison of the coastlines during the studied periods (1976, 1986) and (1986, 2001)



**Figure 7)** backward and forward coastline changes from 2001 to 2018

**Table 2)** Bushehr coastline curves classification and comparison using Leopold (percentage)

<b>Curves' curvature coefficient</b>	<b>1976</b>	<b>1986</b>	<b>2001</b>	<b>2018</b>
<b>&lt;1</b>	18	8	11	10
<b>1-1.5</b>	39	70	77	81
<b>1.5-2</b>	20	13	9	6
<b>&gt;2</b>	23	9	3	3