

Table 1) Effect of Hydro-Alcoholic turmeric extract (1000 mg per kg) and Adriamycin (5 mg per kg) on the GFR mean (milliliter per minute)

The Control Group	Adriamycin Group	Turmeric Extract Group	Turmeric Extract Group Plus Adriamycin
Day zero and 6 0.36±0.03	0.47±0.06	0.33±0.01	0.39±0.03
Day 10 0.38±0.01	0.35±0.05	0.73±0.04*	0.36±0.04
Day 14 0.49±0.04	0.27±0.05	0.42±0.01*	0.38±0.04
Day 21 0.49±0.04	0.19±0.03*	0.44±0.02*	0.40±0.02
Day 28 0.33±0.08	0.23±0.04	0.41±0.02*	0.40±0.03
Day 35 0.48±0.04	0.17±0.03*	0.36±0.03	0.39±0.05

*p<0.05 compared to the mean of days zero to 6 within the group

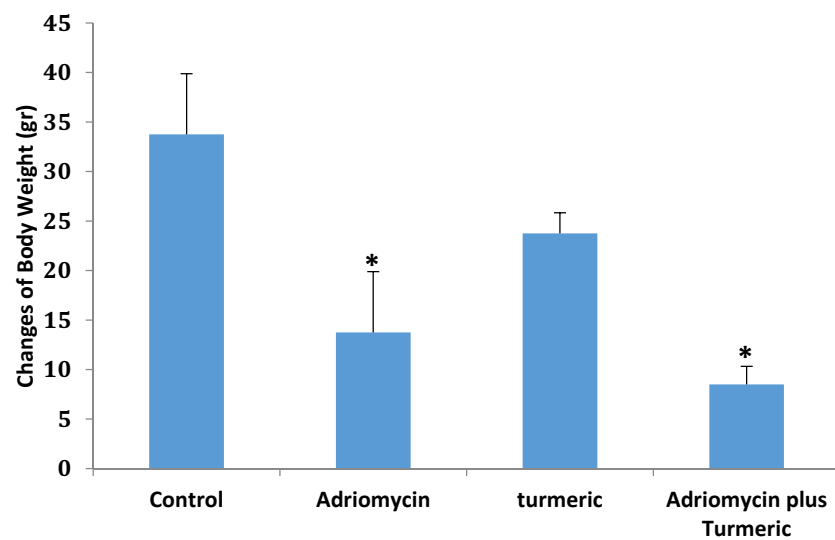


Figure 1) Examining the changes of weight compared to the control group using one-way ANOVA and Tukey Post-hoc test (* $p < 0.05$ compared to the control group)

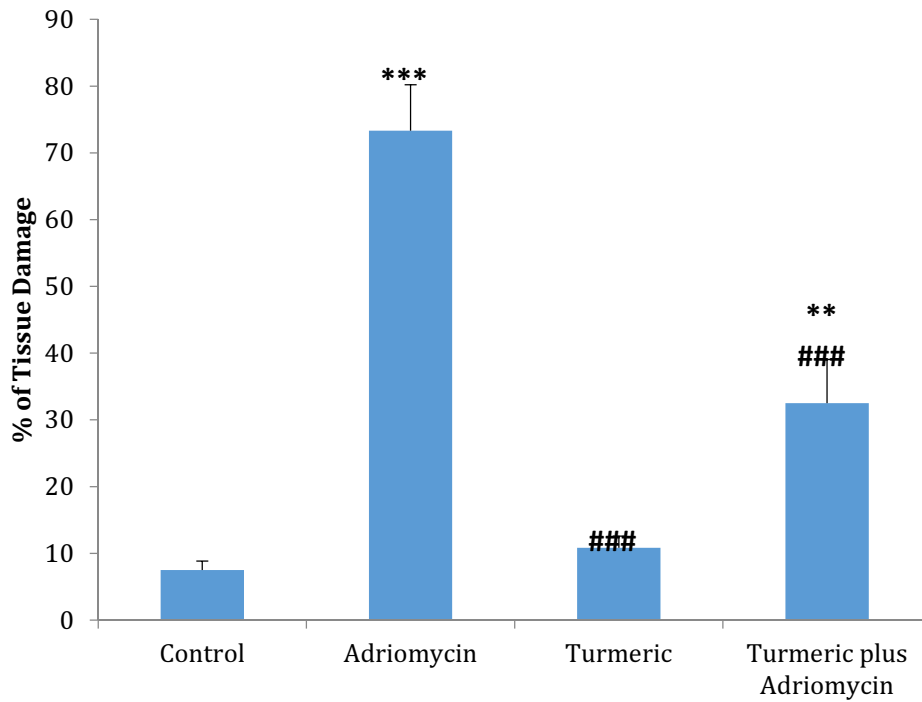


Figure 2) The mean percentage of damaged kidney tissue in different studied groups compared with the control group and Adriamycin group using one-way ANOVA and Turkey post-hoc test (**p<0.001 and **p<0.01 compared to the control group, ### p<0.001 compared to the Adriamycin group)

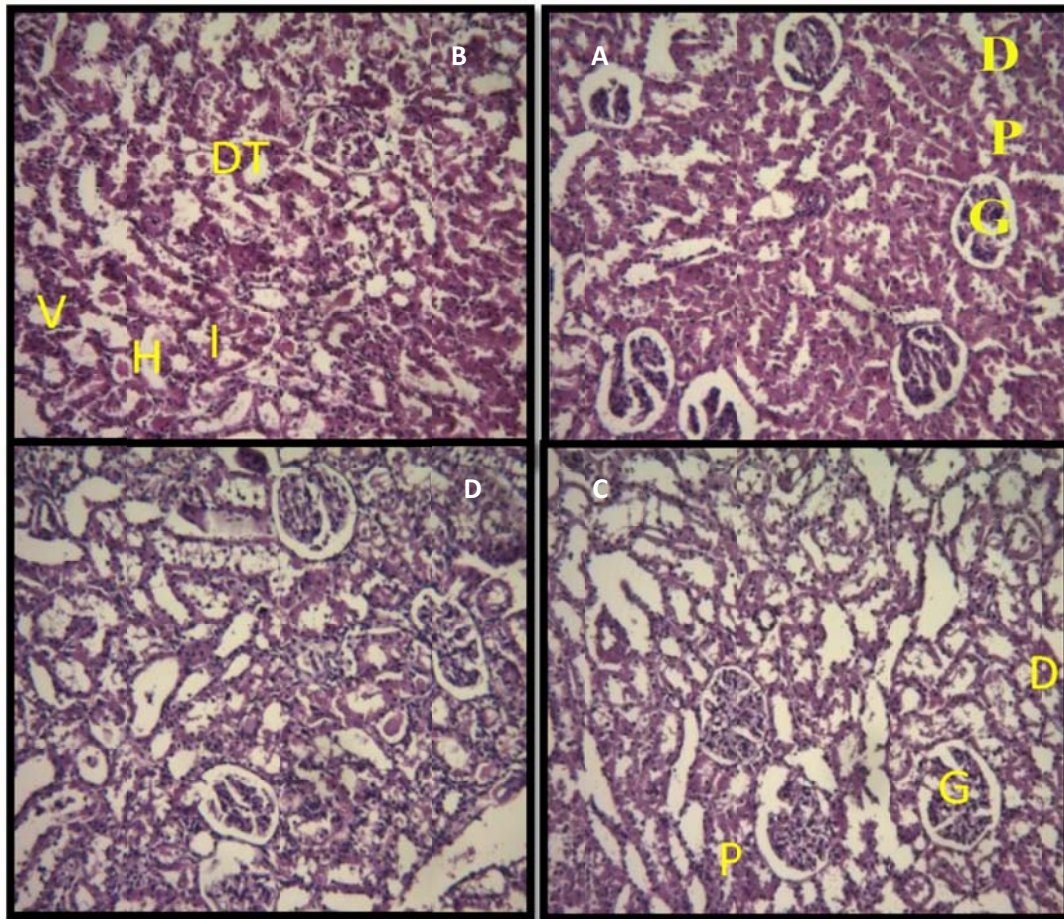


Figure 1) Microscopic section of cortex area in the control group (A), Adriamycin group (B), Turmeric extract group (C), and Adriamycin + turmeric extract group (D), Glomeruli (G), proximal tubules (P), and healthy distal (D), hyaline casts (HC), vacuolization (V), inflammation and vascular congestion (I), tubular dilation (DT)